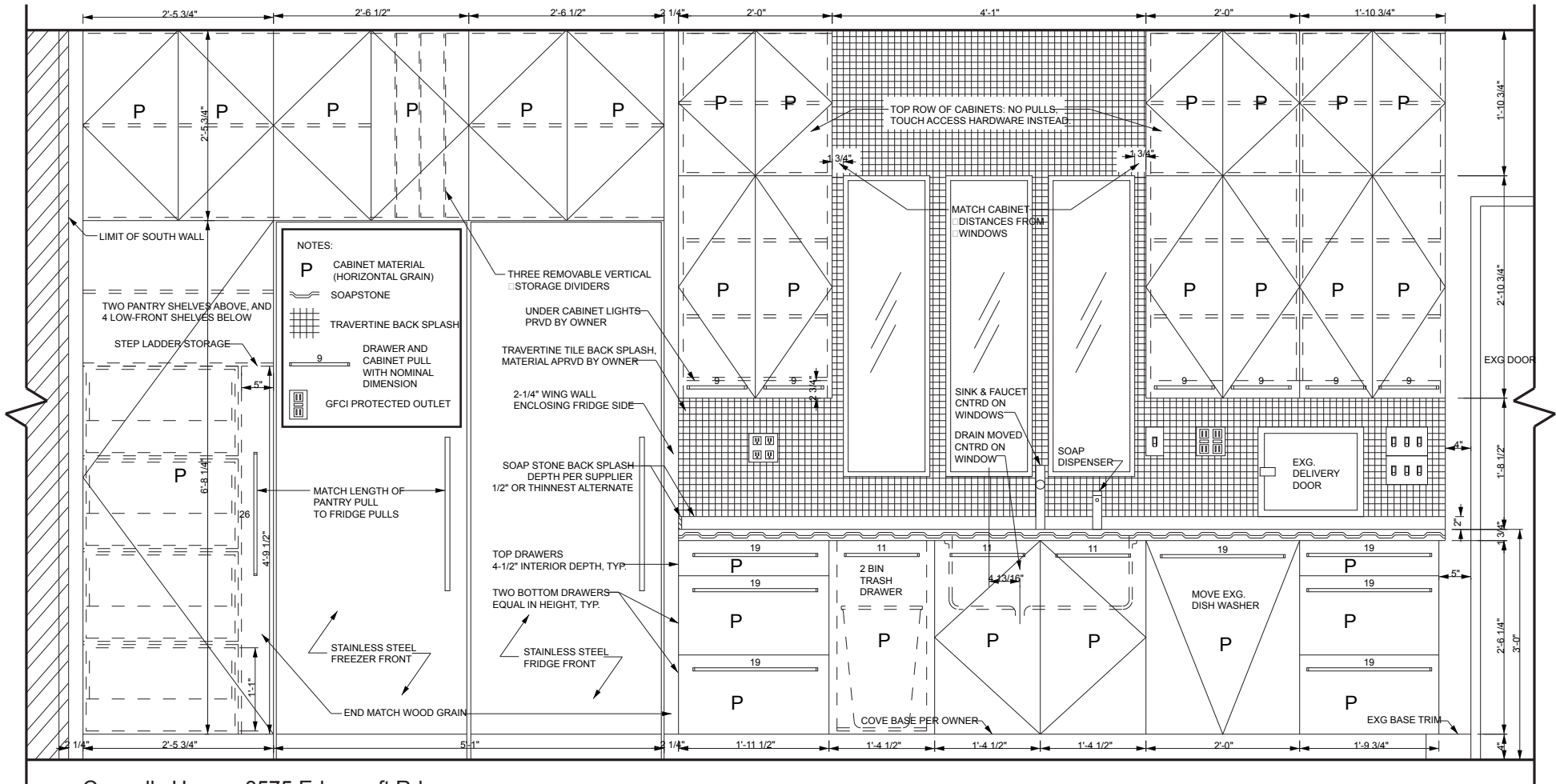


Connelly House, 3575 Edencroft Rd.  
 Huntingdon Valley, PA

prepared by Erik Soderberg, Architect  
 Philadelphia, PA 267-334-5566

Kitchen Project  
 North Elevation  
 June 5, 2009 Scale: 1/2"=1'





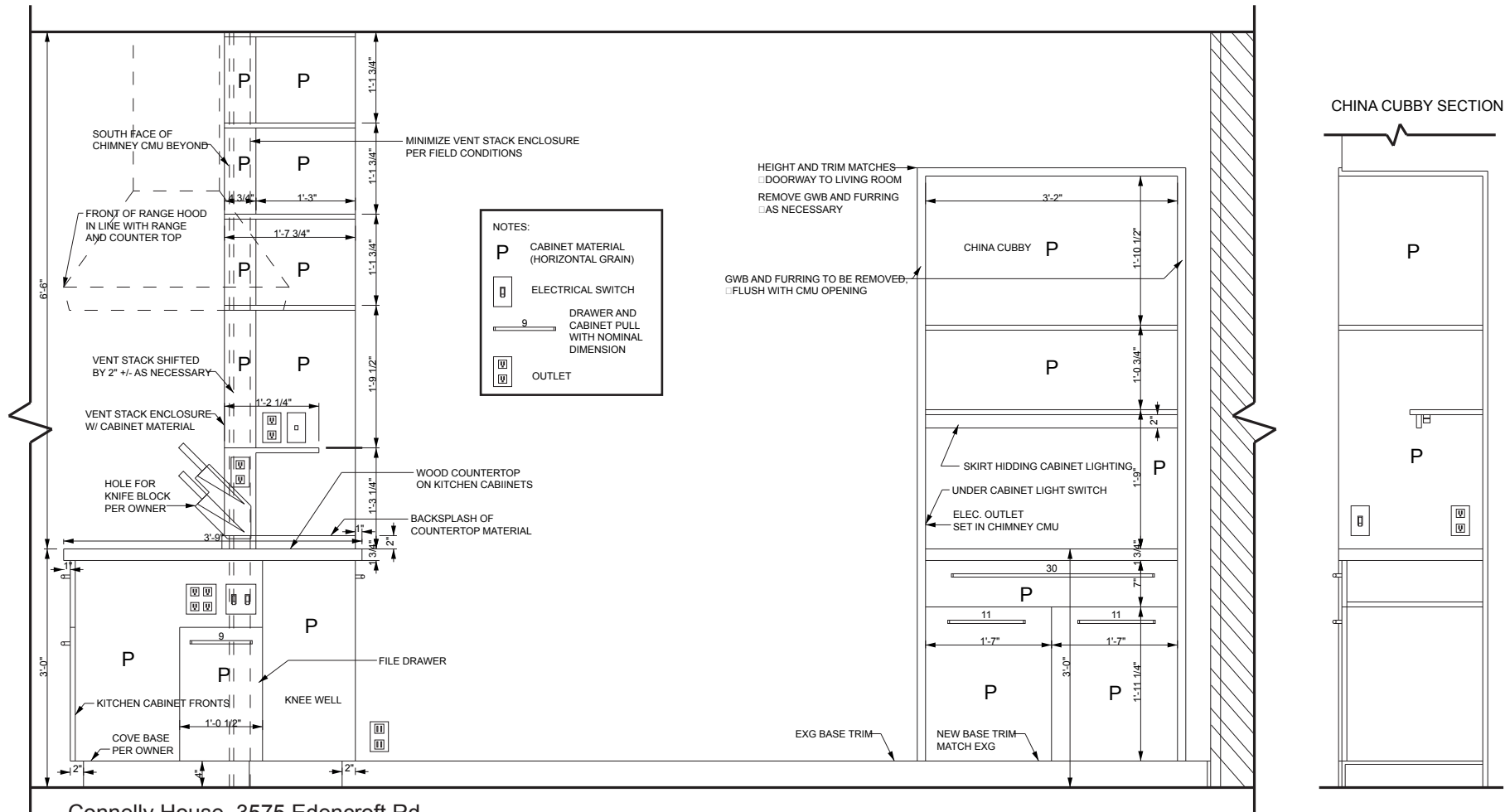
Connelly House, 3575 Edencroft Rd.  
Huntingdon Valley, PA

prepared by Erik Soderberg, Architect  
Philadelphia, PA 267-334-5566

Kitchen Project  
South Elevation  
June 5, 2009 Scale: 1/2"=1'





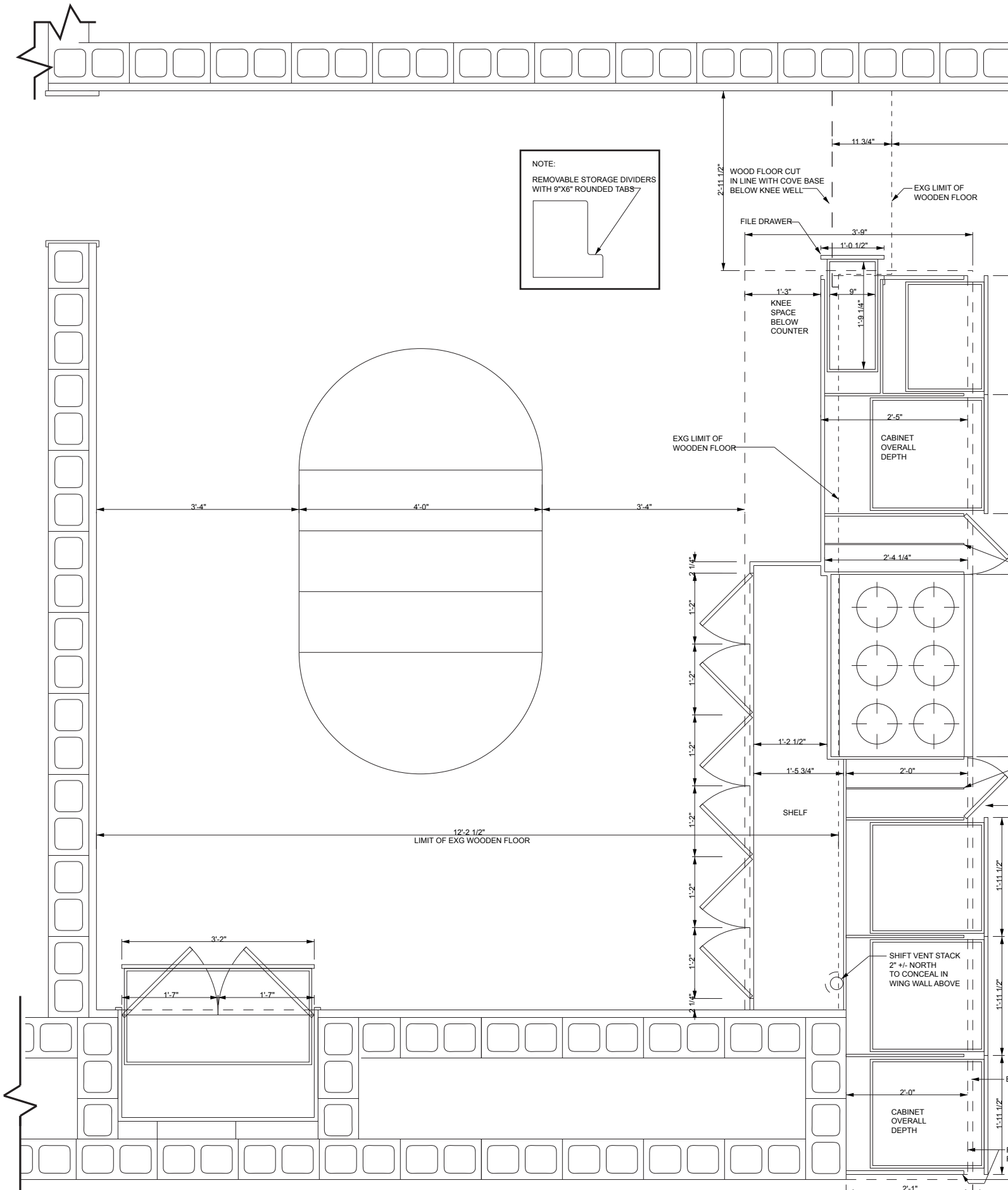


Connelly House, 3575 Edencroft Rd.  
Huntingdon Valley, PA

prepared by Erik Soderberg, Architect  
Philadelphia, PA 267-334-5566

Kitchen Project  
West Elevation  
June 5, 2009 Scale: 1/2"=1'



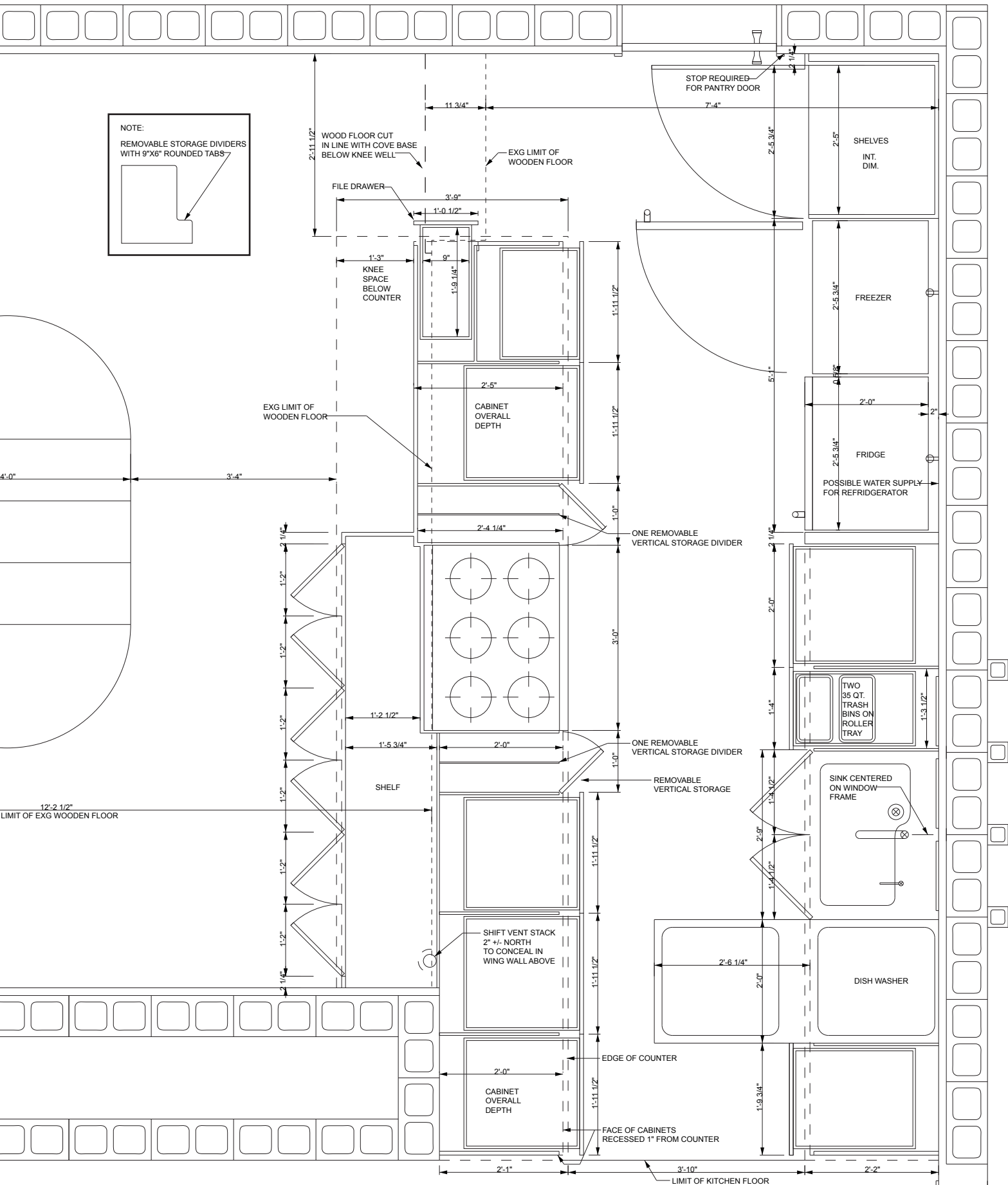


NOTE:  
 REMOVABLE STORAGE DIVIDERS  
 WITH 9"x6" ROUNDED TABS

Connelly House, 3575 Edencroft Rd.  
 Huntingdon Valley, PA  
 prepared by Erik Soderberg, Architect  
 Philadelphia, PA 267-334-5566

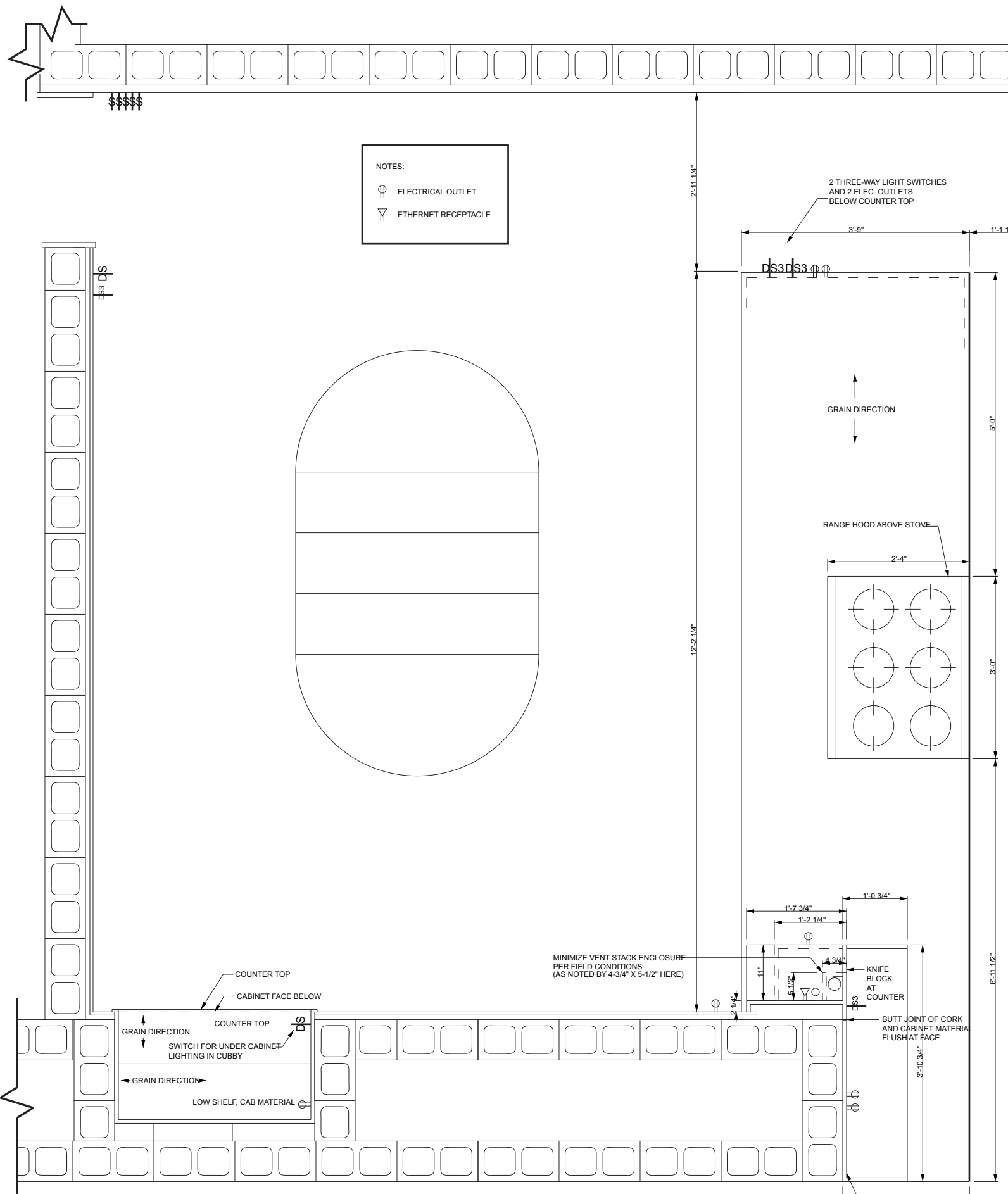
Kitchen Project  
 Lower Cabinets  
 June 3, 2009 Scale: 1/2"=1'





NOTE:  
 REMOVABLE STORAGE DIVIDERS  
 WITH 9"x6" ROUNDED TABS





NOTES:  
 ⓪ ELECTRICAL OUTLET  
 Ⓜ ETHERNET RECEPTACLE

2 THREE-WAY LIGHT SWITCHES  
 AND 2 ELEC. OUTLETS  
 BELOW COUNTER TOP

GRAIN DIRECTION

RANGE HOOD ABOVE STOVE

MINIMIZE VENT STACK ENCLOSURE  
 PER FIELD CONDITIONS  
 (AS NOTED BY 4-3/4" X 5-1/2" HERE)

BUTT JOINT OF CORK  
 AND CABINET MATERIAL  
 FLUSH AT FACE

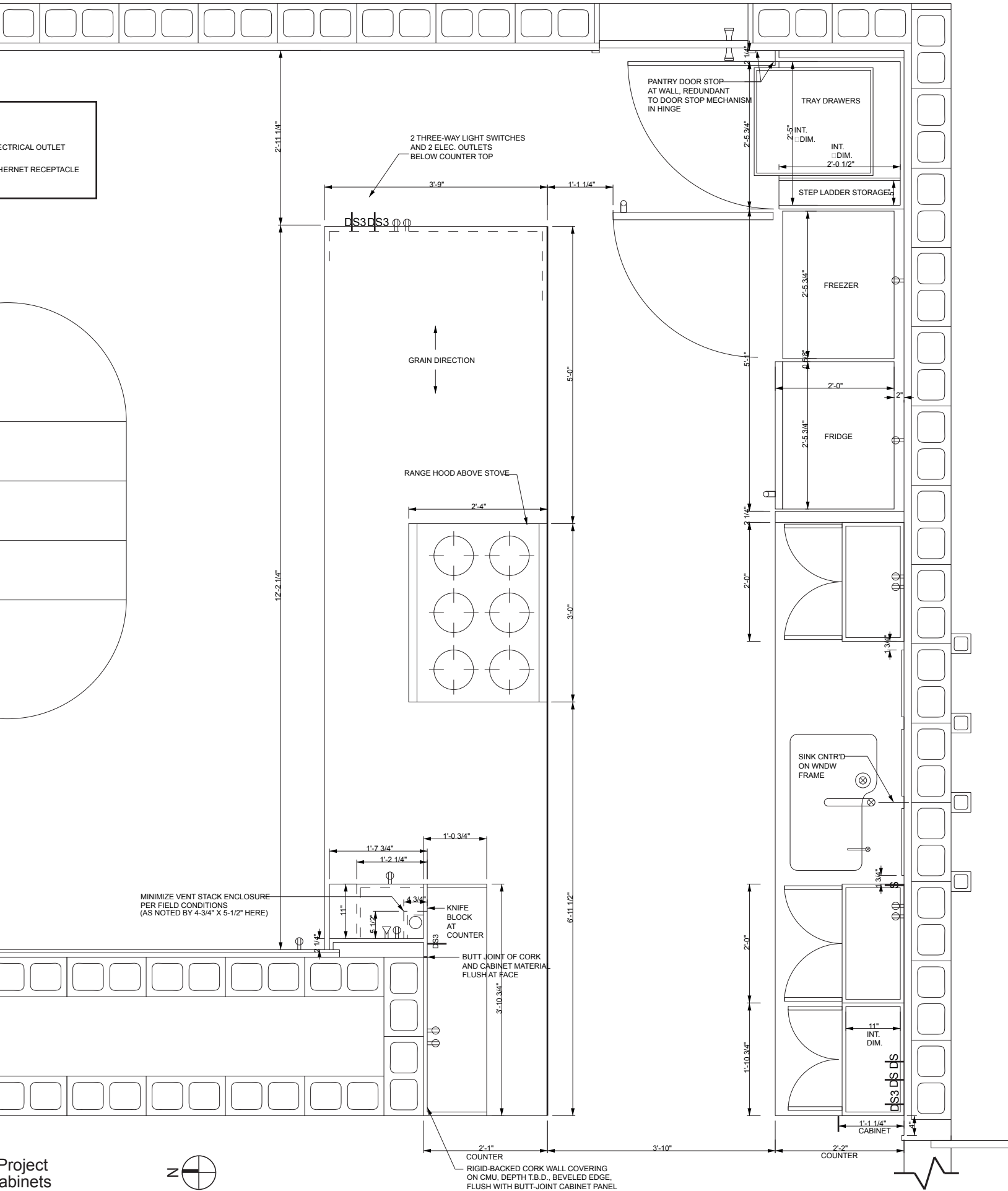
RIGID-BACKED CORK WALL COVERING  
 ON CMU, DEPTH T.B.D., BEVELED  
 FLUSH WITH BUTT-JOINT CABINET

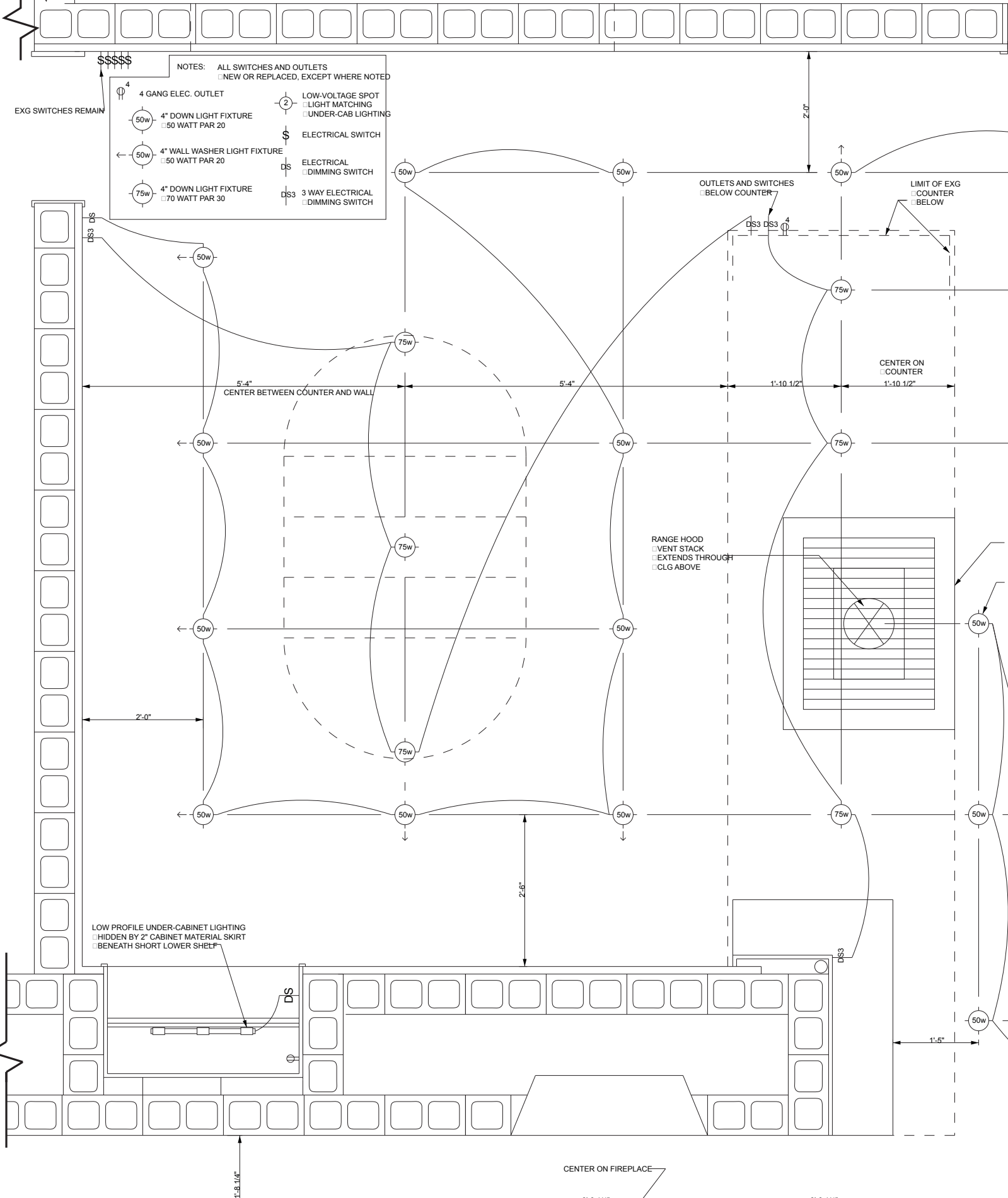
Connelly House, 3575 Edencroft Rd.  
 Huntingdon Valley, PA

prepared by Erik Soderberg, Architect  
 Philadelphia, PA 267-334-5566

Kitchen Project  
 Upper Cabinets  
 June 3, 2009 Scale: 1/2"=1'







NOTES: ALL SWITCHES AND OUTLETS  
□ NEW OR REPLACED, EXCEPT WHERE NOTED

- Ⓞ 4 4 GANG ELEC. OUTLET
- Ⓞ 4" DOWN LIGHT FIXTURE  
□ 50 WATT PAR 20
- Ⓞ 4" WALL WASHER LIGHT FIXTURE  
□ 50 WATT PAR 20
- Ⓞ 4" DOWN LIGHT FIXTURE  
□ 70 WATT PAR 30
- Ⓞ LOW-VOLTAGE SPOT  
□ LIGHT MATCHING  
□ UNDER-CAB LIGHTING
- Ⓞ ELECTRICAL SWITCH
- Ⓞ ELECTRICAL  
□ DIMMING SWITCH
- Ⓞ 3 WAY ELECTRICAL  
□ DIMMING SWITCH

EXG SWITCHES REMAIN

OUTLETS AND SWITCHES  
□ BELOW COUNTER

LIMIT OF EXG  
□ COUNTER  
□ BELOW

CENTER ON  
□ COUNTER

RANGE HOOD  
□ VENT STACK  
□ EXTENDS THROUGH  
□ CLG ABOVE

LOW PROFILE UNDER-CABINET LIGHTING  
□ HIDDEN BY 2" CABINET MATERIAL SKIRT  
□ BENEATH SHORT LOWER SHELF

CENTER ON FIREPLACE

1'-8 1/4"

3'-9 1/4"

3'-9 1/4"

5'-4" CENTER BETWEEN COUNTER AND WALL

5'-4"

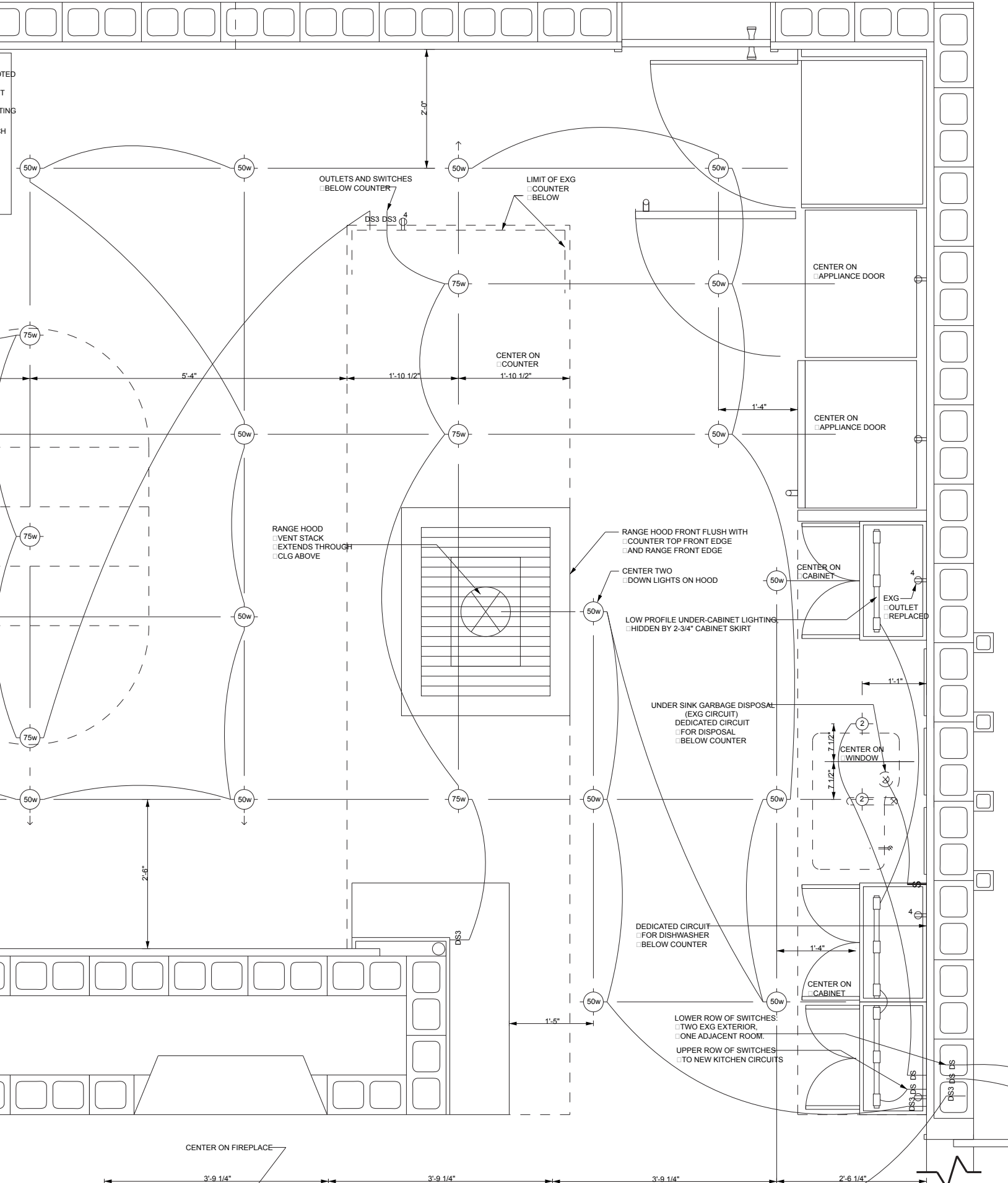
1'-10 1/2"

1'-10 1/2"

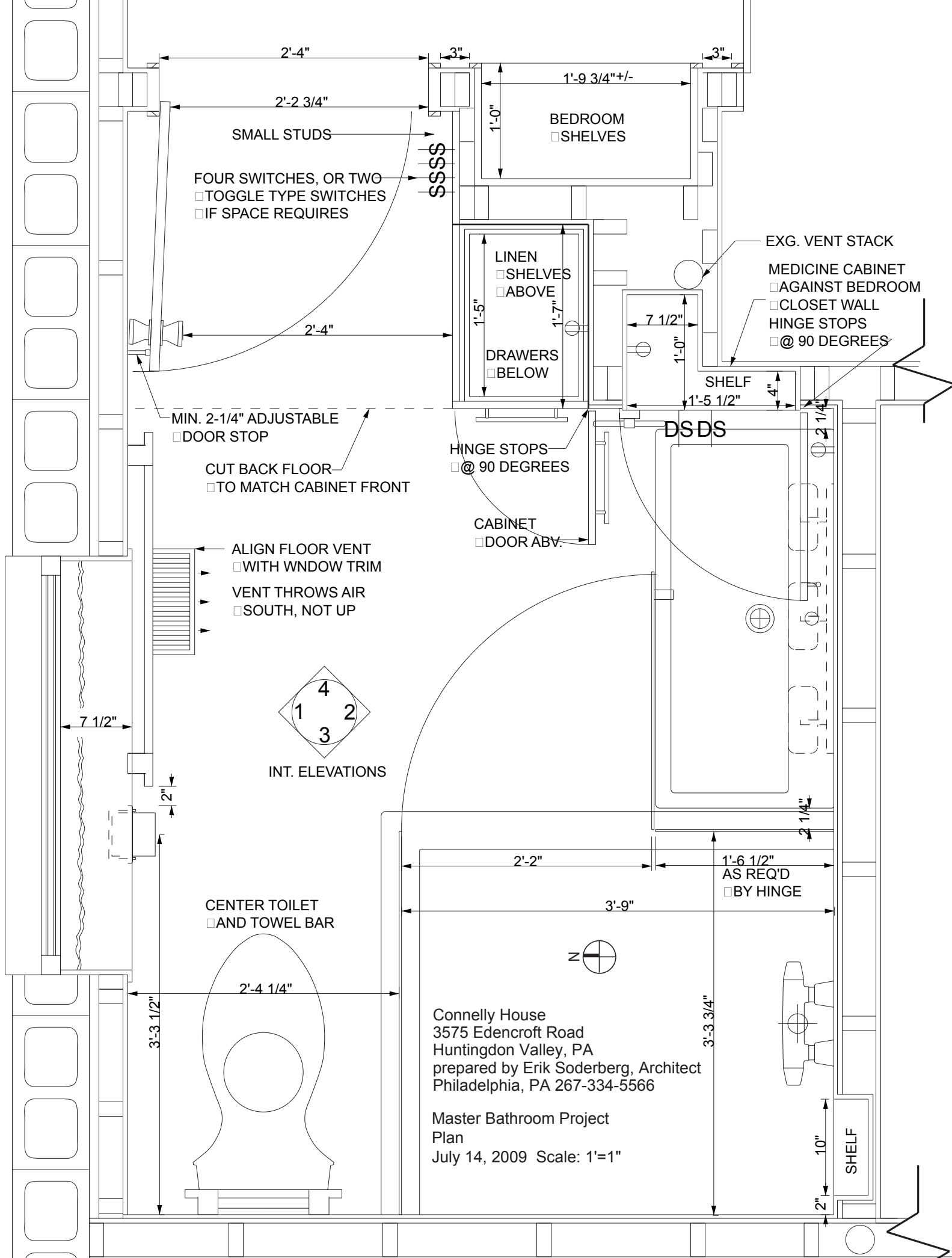
2'-0"

2'-6"

1'-5"







SMALL STUDS

FOUR SWITCHES, OR TWO  
 TOGGLE TYPE SWITCHES  
 IF SPACE REQUIRES

BEDROOM  
 SHELVES

LINEN  
 SHELVES  
 ABOVE

DRAWERS  
 BELOW

EXG. VENT STACK

MEDICINE CABINET  
 AGAINST BEDROOM  
 CLOSET WALL  
 HINGE STOPS  
 @ 90 DEGREES

MIN. 2-1/4" ADJUSTABLE  
 DOOR STOP

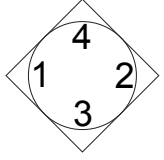
CUT BACK FLOOR  
 TO MATCH CABINET FRONT

HINGE STOPS  
 @ 90 DEGREES

CABINET  
 DOOR ABV.

ALIGN FLOOR VENT  
 WITH WINDOW TRIM

VENT THROWS AIR  
 SOUTH, NOT UP



INT. ELEVATIONS

CENTER TOILET  
 AND TOWEL BAR

1'-6 1/2"  
AS REQ'D  
 BY HINGE



Connelly House  
3575 Edencroft Road  
Huntingdon Valley, PA  
prepared by Erik Soderberg, Architect  
Philadelphia, PA 267-334-5566

Master Bathroom Project  
Plan  
July 14, 2009 Scale: 1"=1"

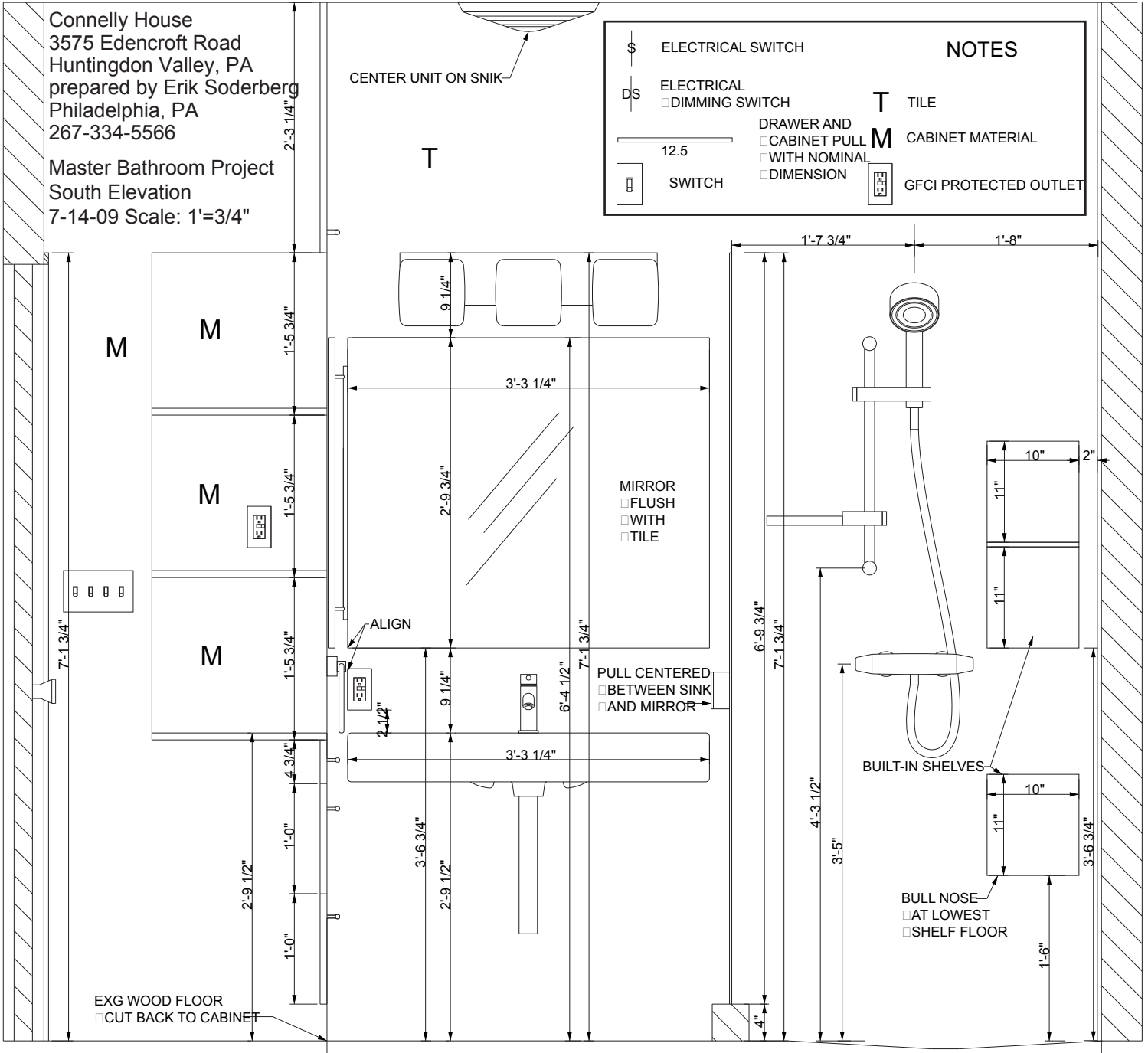
SHELF

Connelly House  
 3575 Edencroft Road  
 Huntingdon Valley, PA  
 prepared by Erik Soderberg  
 Philadelphia, PA  
 267-334-5566

Master Bathroom Project  
 South Elevation  
 7-14-09 Scale: 1'=3/4"

CENTER UNIT ON SNIK

NOTES	
\$	ELECTRICAL SWITCH
DS	ELECTRICAL
□	DIMMING SWITCH
12.5	DRAWER AND CABINET PULL WITH NOMINAL DIMENSION
□	SWITCH
T	TILE
M	CABINET MATERIAL
□	GFCI PROTECTED OUTLET



EXG WOOD FLOOR  
 □ CUT BACK TO CABINET

MIRROR  
 □ FLUSH  
 □ WITH TILE

PULL CENTERED  
 □ BETWEEN SINK AND MIRROR

BUILT-IN SHELVES

BULL NOSE  
 □ AT LOWEST  
 □ SHELF FLOOR

Connelly House  
3575 Edencroft Road  
Huntingdon Valley, PA  
prepared by Erik Soderberg, Architect  
Philadelphia, PA 267-334-5566

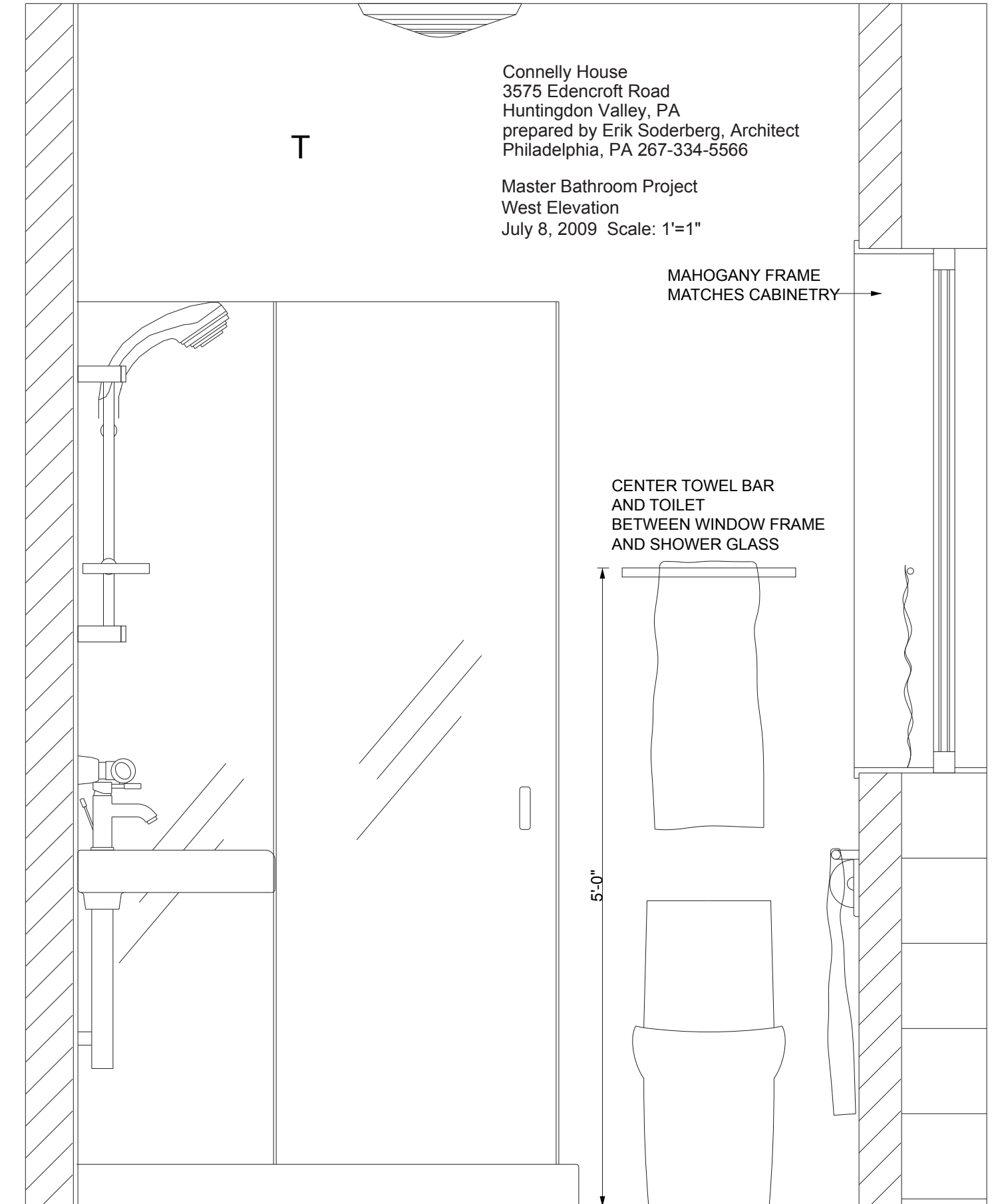
T

Master Bathroom Project  
West Elevation  
July 8, 2009 Scale: 1'=1"

MAHOGANY FRAME  
MATCHES CABINETRY

CENTER TOWEL BAR  
AND TOILET  
BETWEEN WINDOW FRAME  
AND SHOWER GLASS

5'-0"



Connelly House  
3575 Edencroft Road  
Huntingdon Valley, PA  
prepared by Erik Soderberg, Architect  
Philadelphia, PA 267-334-5566

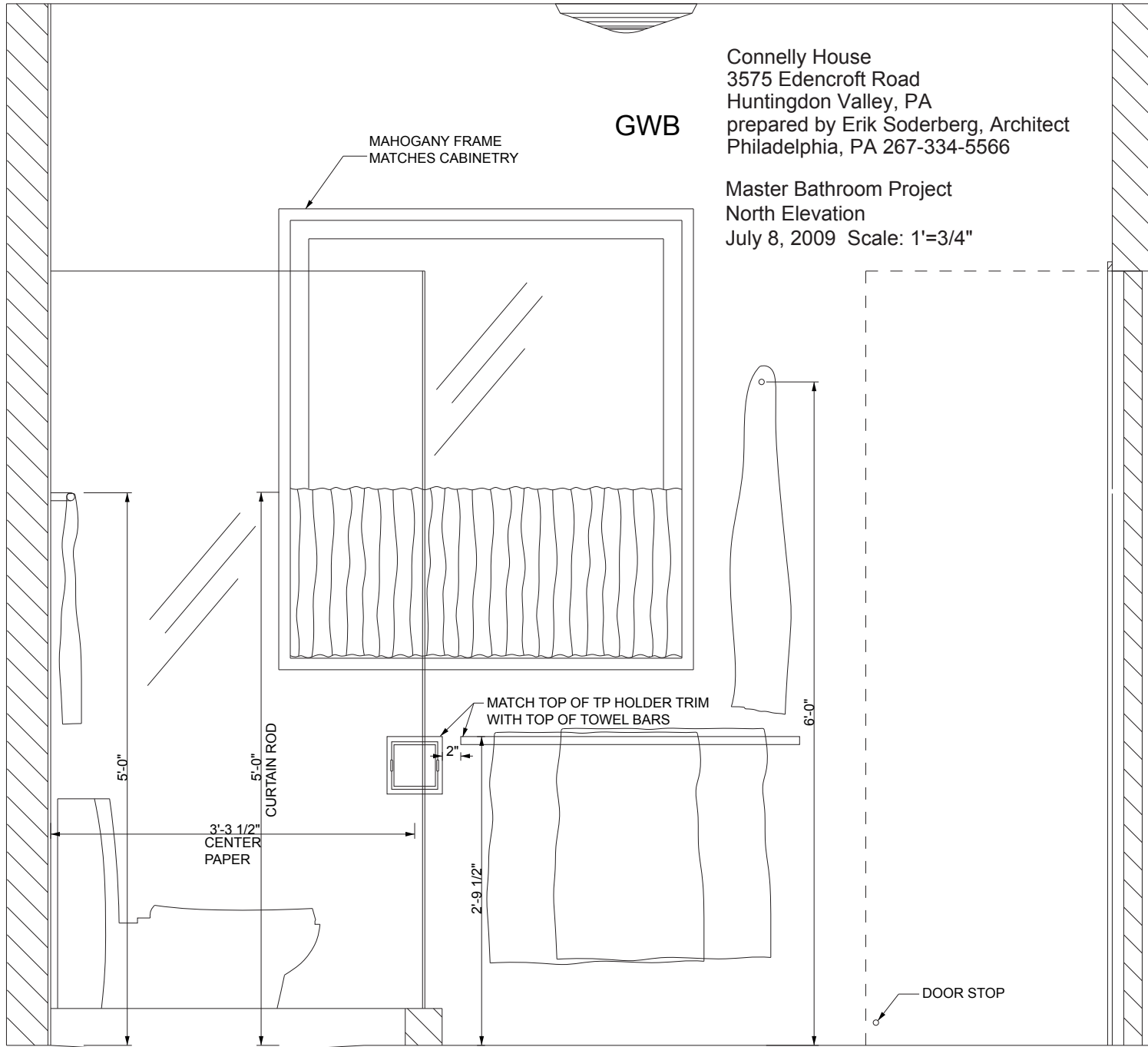
Master Bathroom Project  
North Elevation  
July 8, 2009 Scale: 1'=3/4"

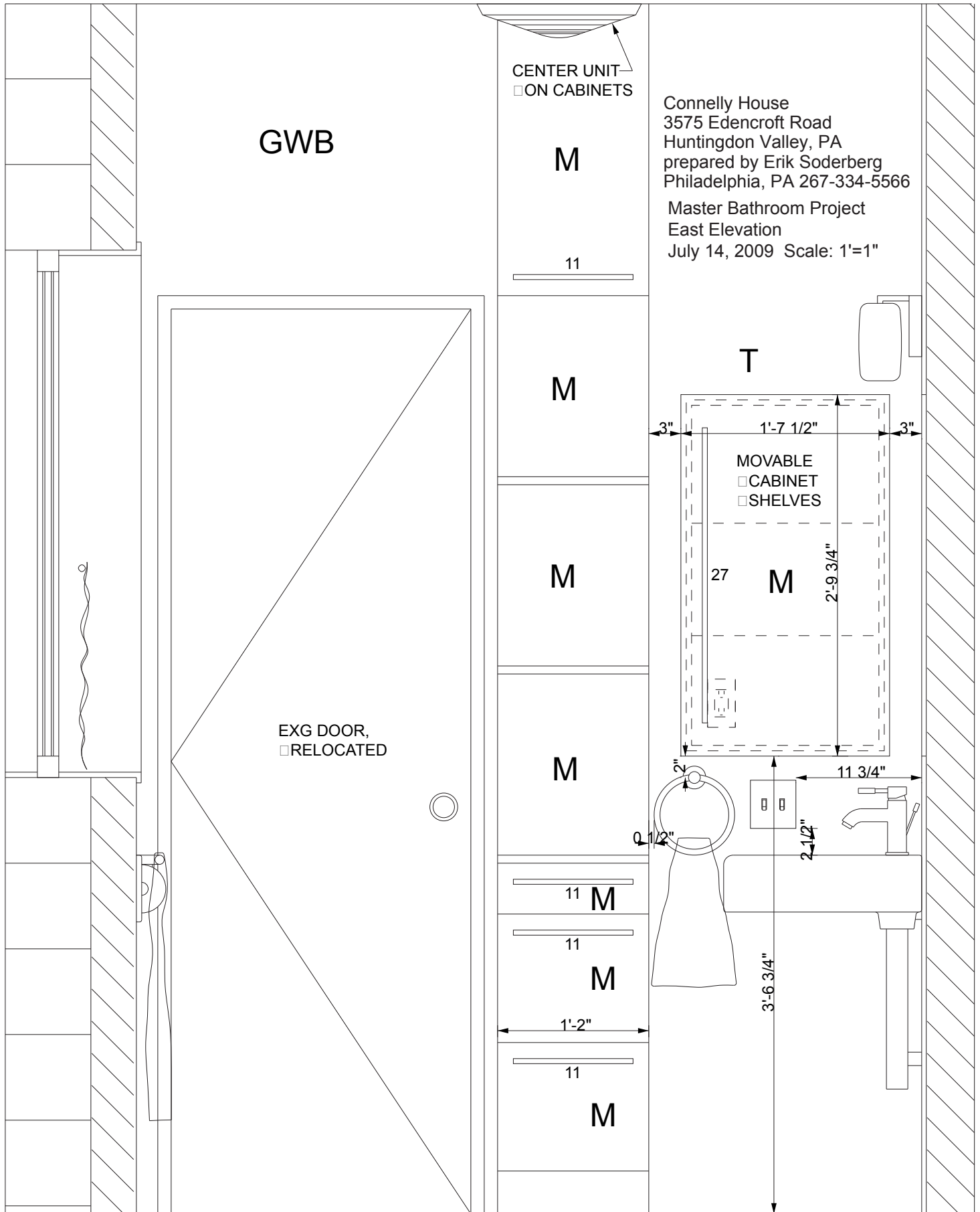
GWB

MAHOGANY FRAME  
MATCHES CABINETRY

MATCH TOP OF TP HOLDER TRIM  
WITH TOP OF TOWEL BARS

DOOR STOP





GWB

CENTER UNIT  
 ON CABINETS

M

11

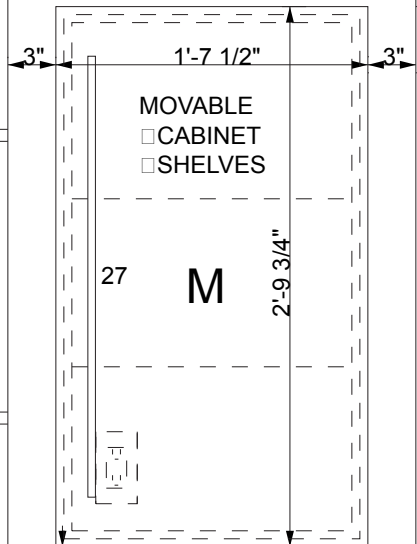
Connelly House  
 3575 Edencroft Road  
 Huntingdon Valley, PA  
 prepared by Erik Soderberg  
 Philadelphia, PA 267-334-5566

Master Bathroom Project  
 East Elevation

July 14, 2009 Scale: 1'=1"

T

M



MOVABLE  
 CABINET  
 SHELVES

27

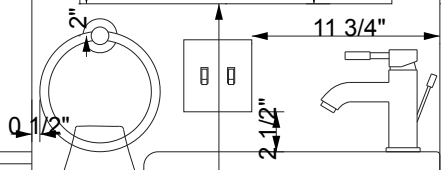
M

2'-9 3/4"

M

M

EXG DOOR,  
 RELOCATED



11 M

11

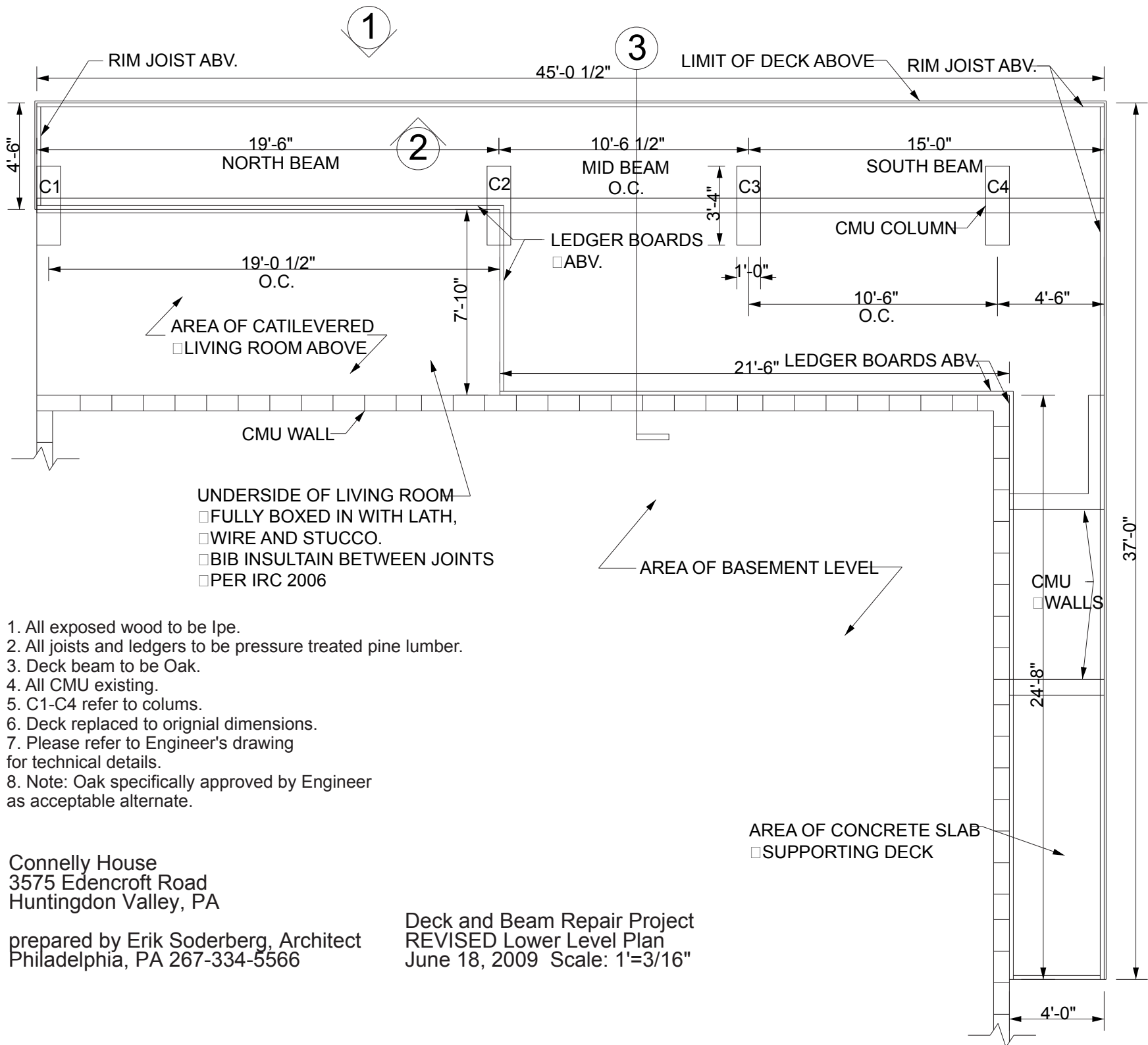
M

1'-2"

11

M

3'-6 3/4"



1. All exposed wood to be lpe.
2. All joists and ledgers to be pressure treated pine lumber.
3. Deck beam to be Oak.
4. All CMU existing.
5. C1-C4 refer to colums.
6. Deck replaced to orignal dimensions.
7. Please refer to Engineer's drawing for technical details.
8. Note: Oak specifically approved by Engineer as acceptable alternate.

Connelly House  
 3575 Edencroft Road  
 Huntingdon Valley, PA

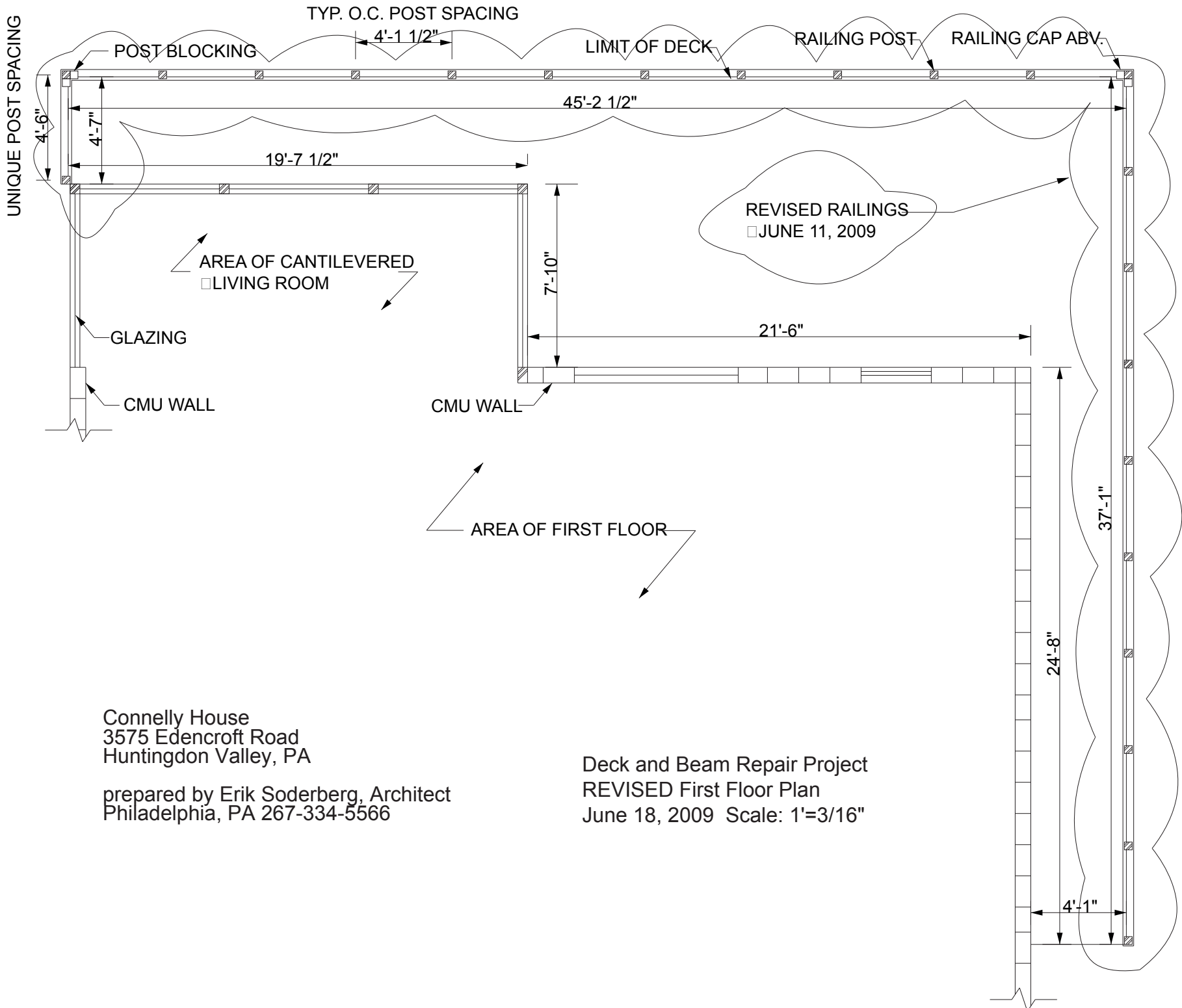
prepared by Erik Soderberg, Architect  
 Philadelphia, PA 267-334-5566

Deck and Beam Repair Project  
 REVISED Lower Level Plan  
 June 18, 2009 Scale: 1'=3/16"

AREA OF CONCRETE SLAB  
 □ SUPPORTING DECK

UNDERSIDE OF LIVING ROOM  
 □ FULLY BOXED IN WITH LATH,  
 □ WIRE AND STUCCO.  
 □ BIB INSULTAIN BETWEEN JOINTS  
 □ PER IRC 2006

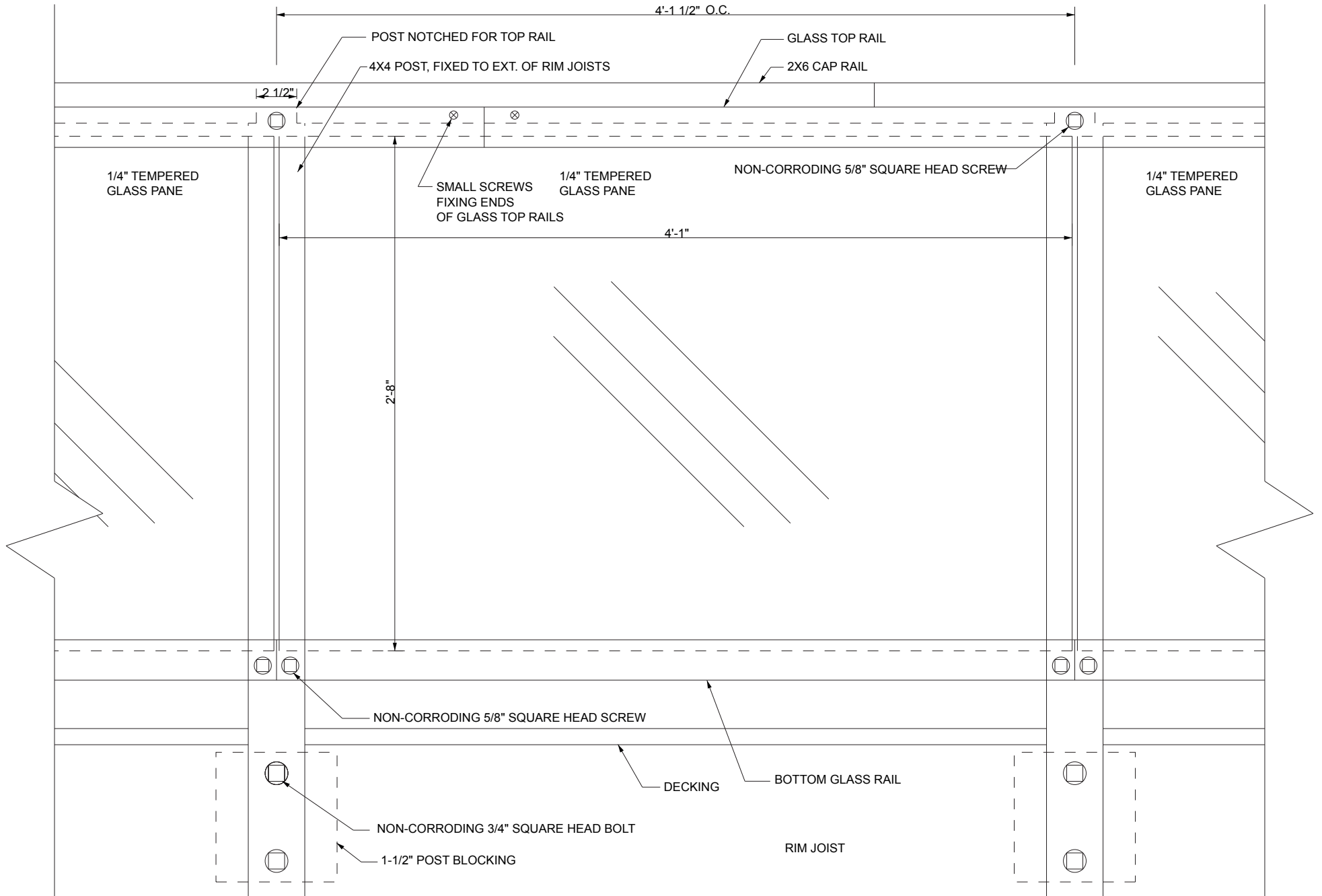
AREA OF BASEMENT LEVEL



Connelly House  
 3575 Edencroft Road  
 Huntingdon Valley, PA

prepared by Erik Soderberg, Architect  
 Philadelphia, PA 267-334-5566

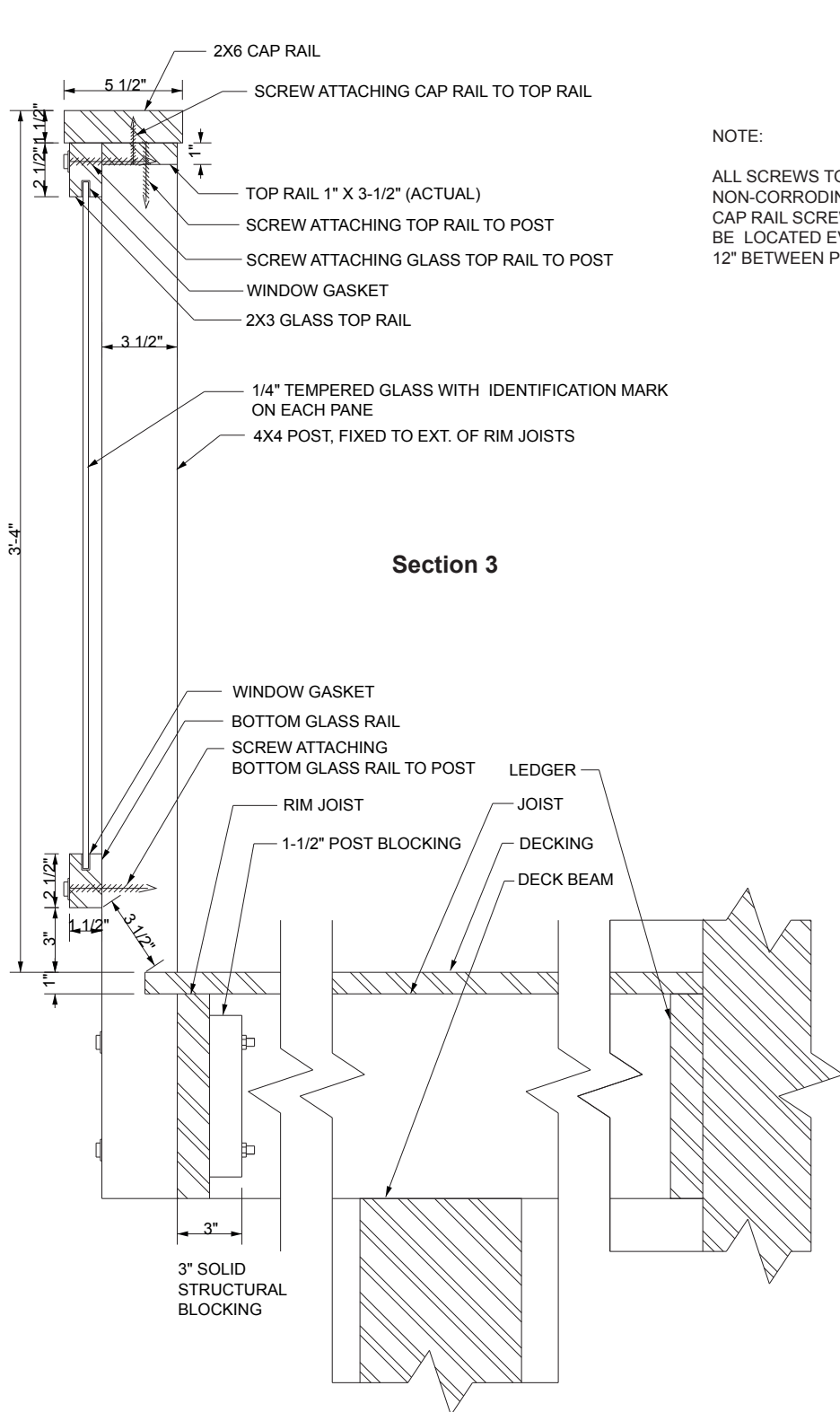
Deck and Beam Repair Project  
 REVISED First Floor Plan  
 June 18, 2009 Scale: 1"=3/16"



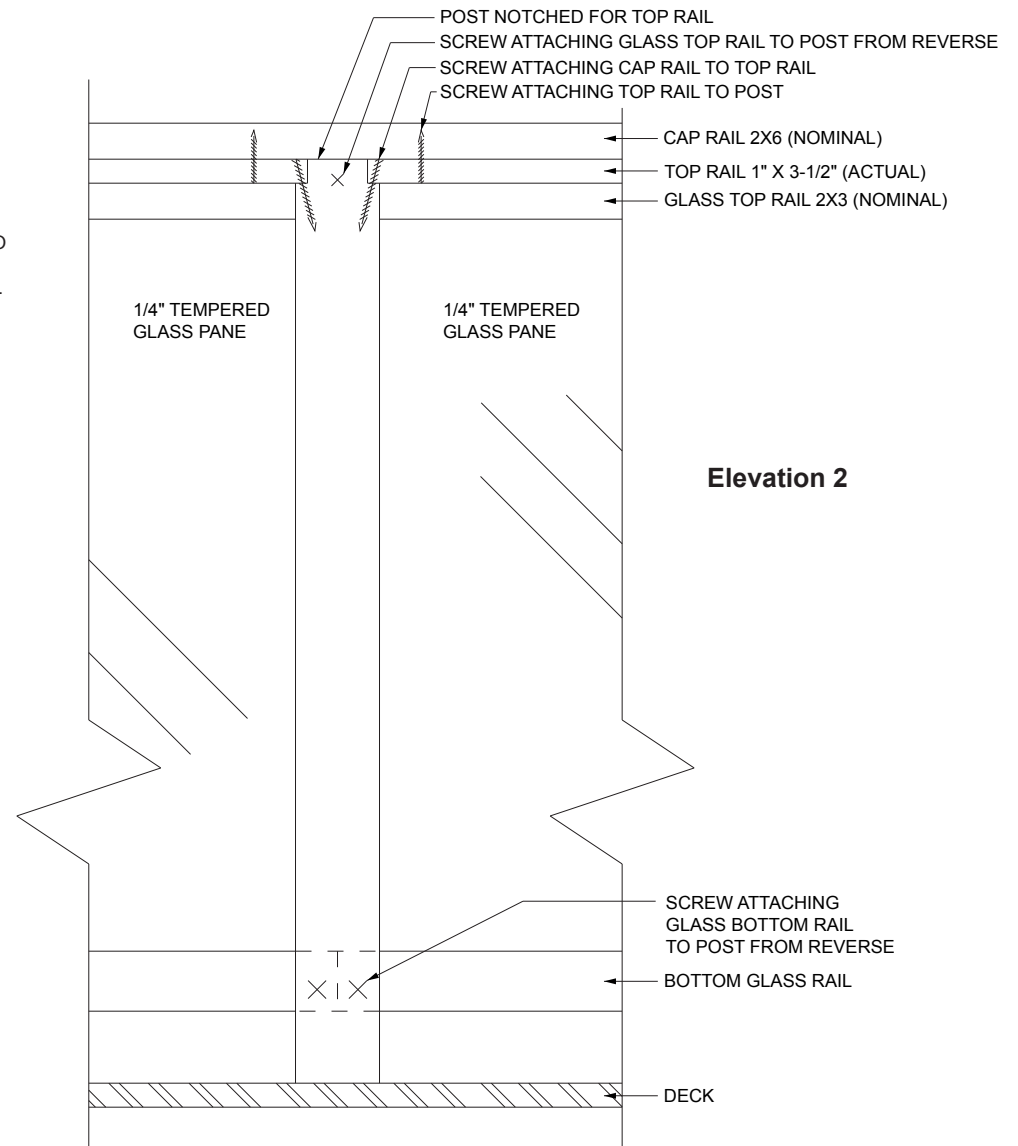
Connelly House  
 3575 Edencroft Road  
 Huntingdon Valley, PA

prepared by Erik Soderberg, Architect  
 Philadelphia, PA 267-334-5566

Deck and Beam Repair Project  
 Elevation 1  
 June 18, 2009 Scale: 1-1/2"=1'



NOTE:  
 ALL SCREWS TO BE NON-CORRODING.  
 CAP RAIL SCREWS TO BE LOCATED EVERY 12" BETWEEN POSTS.



Connelly House  
 3575 Edencroft Road  
 Huntingdon Valley, PA

prepared by  
 Erik Soderberg, Architect  
 Philadelphia, PA 267-334-5566

Deck and Beam Repair Project  
 Elevation 2 and  
 Section 3  
 June 18, 2009 Scale: 1-1/2"=1'